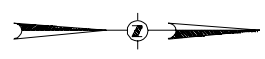


# JACKSON PLACE

THAT PART OF LOTS 1, 2, AND 3 OF OUTAGAME COUNTY CERTIFIED SURVEY MAP NUMBER 293, VOLUME 2 OF C.S.M.S. PAGE 293, EAST OF LODERBAUER ROAD RIGHT-OF-WAY, LOCATED IN THE NORTHWEST 1/4 OF THE FRACTIONAL NORTHWEST 1/4 OF SECTION 31, TOWNSHIP 21 NORTH, RANGE 19 EAST, CITY OF KAUKAUNA, OUTAGAME COUNTY, WISCONSIN.

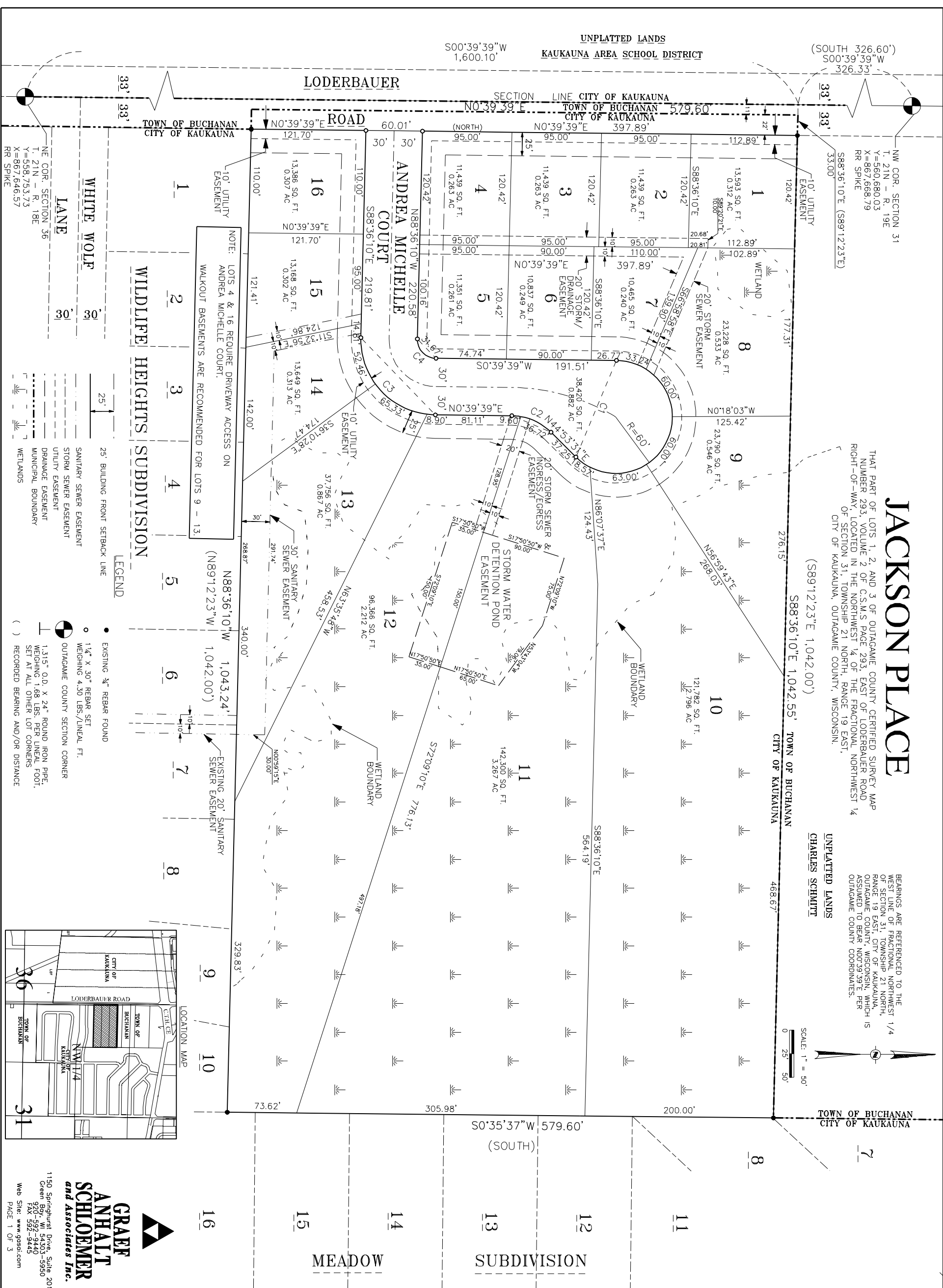
BEARINGS ARE REFERENCED TO THE WEST LINE OF FRACTIONAL NORTHWEST 1/4 OF SECTION 31, TOWNSHIP 21 NORTH, RANGE 19 EAST, CITY OF KAUKAUNA, OUTAGAME COUNTY, WISCONSIN, WHICH IS ASSUMED TO BEAR N00°39'39"E PER OUTAGAME COUNTY COORDINATES.

UNPLATTED LANDS  
CHARLES SCHMITZ



TOWN OF BUCHANAN  
CITY OF KAUKAUNA

UNPLATTED LANDS  
KAUKAUNA AREA SCHOOL DISTRICT

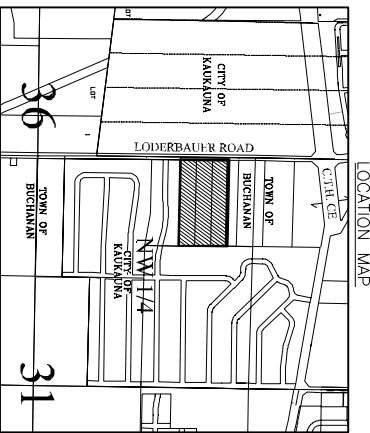


NOTE: LOTS 4 & 16 REQUIRE DRIVEWAY ACCESS ON ANDREA MICHELLE COURT. WALKOUT BASEMENTS ARE RECOMMENDED FOR LOTS 9 - 13.

WILDLIFE HEIGHTS SUBDIVISION

LEGEND

- EXISTING 3/4" REBAR FOUND
- 1 1/2" X 30" REBAR SET
- WEIGHING 4.30 LBS./LINEAL FT.
- OUTAGAME COUNTY SECTION CORNER
- 1.315" O.D. X 24" ROUND IRON PIPE, WEIGHING 1.68 LBS. PER LINEAL FOOT, SET AT ALL OTHER LOT CORNERS
- ( ) RECORDED BEARING AND/OR DISTANCE
- 25' BUILDING FRONT SETBACK LINE
- SANITARY SEWER EASEMENT
- STORM SEWER EASEMENT
- UTILITY EASEMENT
- DRAINAGE EASEMENT
- MUNICIPAL BOUNDARY
- WETLANDS



**GRAEF ANHALT SCHLOEMER and Associates Inc.**

1150 Springhurst Drive, Suite 201  
Green Bay, WI 54303-5950  
920-592-9440  
FAX 920-592-9445  
Web Site: www.gsaai.com

PAGE 1 OF 3