

UNPLATTED LANDS
OWNER: EDCY REVOCABLE TRUST

UNPLATTED LANDS
OWNER: JOSEPH SCHREIBER
ZONED AG

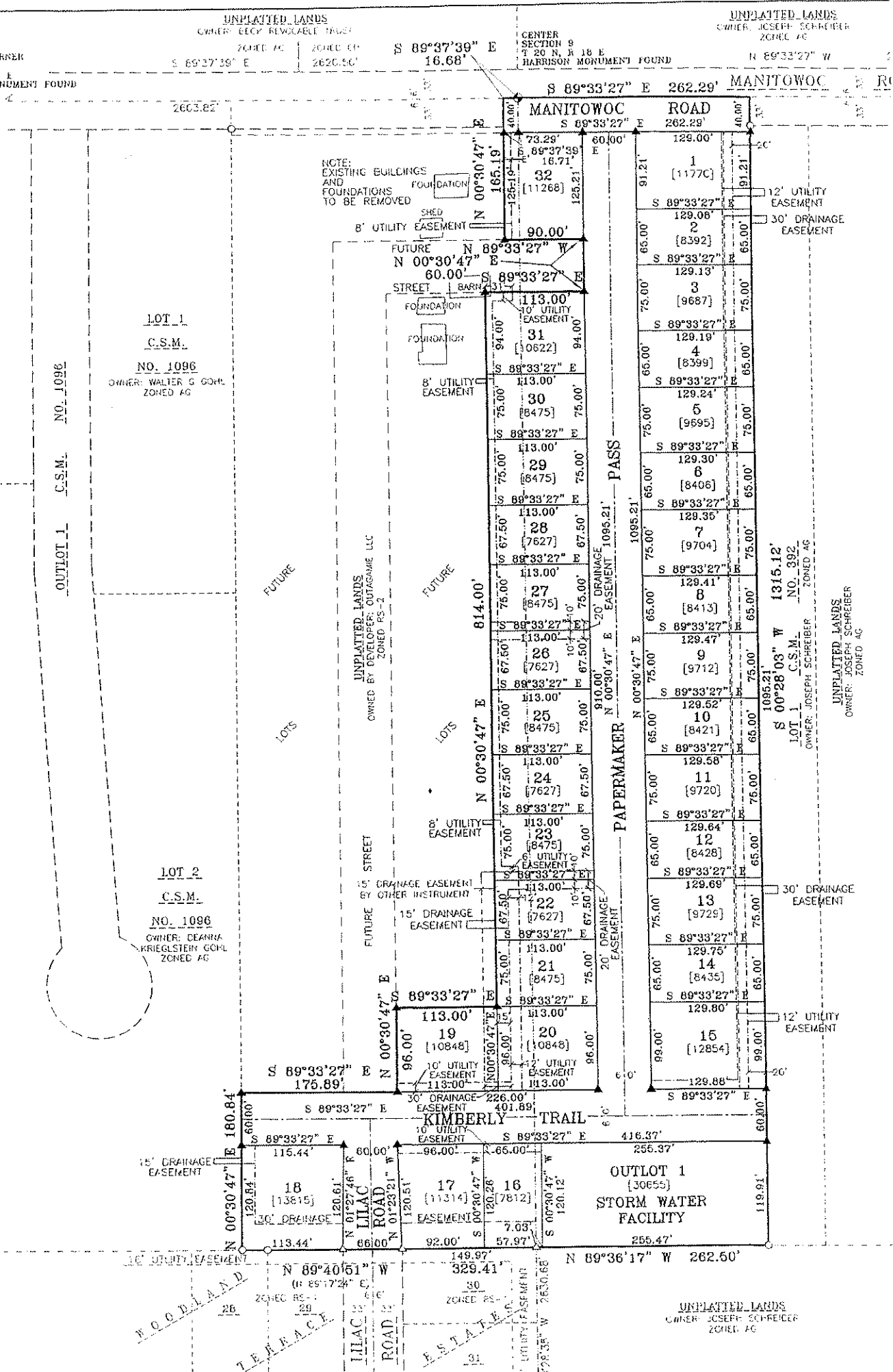
WEST 1/4 CORNER
SECTION 9
T 20 N, R 18 E
HARRISON MONUMENT FOUND

ZONED AG ZONED CP
S 89°37'39" E 2620.50'

CENTER
SECTION 9
T 20 N, R 18 E
HARRISON MONUMENT FOUND
S 89°33'27" E 16.68'

N 89°33'27" W

ST 1/4 AND
ST 1/4 CP
AST,
SIN



LOT 1
C.S.M.
NO. 1096
OWNER: WALTER G GOHL
ZONED AG

LOT 2
C.S.M.
NO. 1096
OWNER: DEANNA
KRIEGLSTEIN GOHL
ZONED AG

UNPLATTED LANDS
OWNER: JOSEPH SCHREIBER
ZONED AG
LOT 1
C.S.M.
NO. 392

PAPERMAKER PASS
N 00°30'47" E 1095.21'
S 89°33'27" E 1095.21'

NOTE:
EXISTING BUILDINGS
AND
FOUNDATIONS
TO BE REMOVED

8' UTILITY EASEMENT

FUTURE STREET

FOUNDATION

FOUNDATION

FOUNDATION

8' UTILITY EASEMENT

8' UTILITY EASEMENT

8' UTILITY EASEMENT

8' UTILITY EASEMENT

8' UTILITY EASEMENT

8' UTILITY EASEMENT

8' UTILITY EASEMENT

8' UTILITY EASEMENT

8' UTILITY EASEMENT

8' UTILITY EASEMENT

8' UTILITY EASEMENT

8' UTILITY EASEMENT

8' UTILITY EASEMENT

8' UTILITY EASEMENT

8' UTILITY EASEMENT

8' UTILITY EASEMENT

8' UTILITY EASEMENT

8' UTILITY EASEMENT

8' UTILITY EASEMENT

8' UTILITY EASEMENT

8' UTILITY EASEMENT

8' UTILITY EASEMENT

8' UTILITY EASEMENT

8' UTILITY EASEMENT

8' UTILITY EASEMENT

8' UTILITY EASEMENT

8' UTILITY EASEMENT

8' UTILITY EASEMENT

8' UTILITY EASEMENT

8' UTILITY EASEMENT

8' UTILITY EASEMENT

8' UTILITY EASEMENT

8' UTILITY EASEMENT

8' UTILITY EASEMENT

8' UTILITY EASEMENT

8' UTILITY EASEMENT

12' UTILITY EASEMENT

30' DRAINAGE EASEMENT

30' DRAINAGE EASEMENT

30' DRAINAGE EASEMENT

30' DRAINAGE EASEMENT

30' DRAINAGE EASEMENT

30' DRAINAGE EASEMENT

30' DRAINAGE EASEMENT

30' DRAINAGE EASEMENT

30' DRAINAGE EASEMENT

30' DRAINAGE EASEMENT

30' DRAINAGE EASEMENT

30' DRAINAGE EASEMENT

30' DRAINAGE EASEMENT

30' DRAINAGE EASEMENT

30' DRAINAGE EASEMENT

30' DRAINAGE EASEMENT

30' DRAINAGE EASEMENT

30' DRAINAGE EASEMENT

30' DRAINAGE EASEMENT

30' DRAINAGE EASEMENT

30' DRAINAGE EASEMENT

30' DRAINAGE EASEMENT

30' DRAINAGE EASEMENT

30' DRAINAGE EASEMENT

30' DRAINAGE EASEMENT

30' DRAINAGE EASEMENT

30' DRAINAGE EASEMENT

30' DRAINAGE EASEMENT

30' DRAINAGE EASEMENT

30' DRAINAGE EASEMENT

30' DRAINAGE EASEMENT

30' DRAINAGE EASEMENT

30' DRAINAGE EASEMENT

30' DRAINAGE EASEMENT

30' DRAINAGE EASEMENT

30' DRAINAGE EASEMENT

30' DRAINAGE EASEMENT

30' DRAINAGE EASEMENT

30' DRAINAGE EASEMENT

30' DRAINAGE EASEMENT

30' DRAINAGE EASEMENT

30' DRAINAGE EASEMENT

WOODLAND TERRACE

WILLOW ROAD

ESTATE

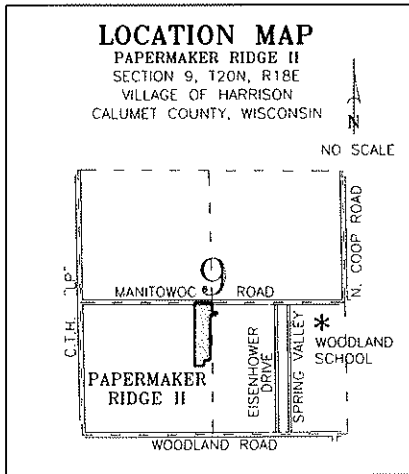
OUTLOT 1
{30655}
STORM WATER FACILITY

UNPLATTED LANDS
OWNER: JOSEPH SCHREIBER
ZONED AG

PAPERMAKER RIDGE II



SCALE 1" = 150'



Van's
REALTY & CONSTRUCTION

2525 South Oneida Street
 Appleton WI 54915
 920-734-1845
 WWW.VANSCONSTRUCTION.COM

Martenson & Eisele, Inc.

1377 Midway Road
 Menasha, WI 54952
 www.martenson-eisele.com
 info@martenson-eisele.com
 920.731.0351 1.800.236.0381

Planning
 Environmental
 Surveying
 Engineering
 Architecture

Project No.: 1-0067-005

