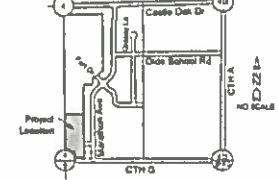


Castle Oak IV

Part of the Southwest 1/4 of the Southeast 1/4 of Section 04, Township 19 North, Range 17 East, City of Neenah, Winnebago County, Wisconsin

LOCATION MAP

SE 1/4 SEC 4, T 19N, R 17E, CITY OF NEENAH, WINNEBAGO COUNTY, WI



Bearings are measured to the S.A. of The SE 1/4 Section 4, T19N, R17E assumed to bear S88°48'14"W based on the Winnebago County coordinate system

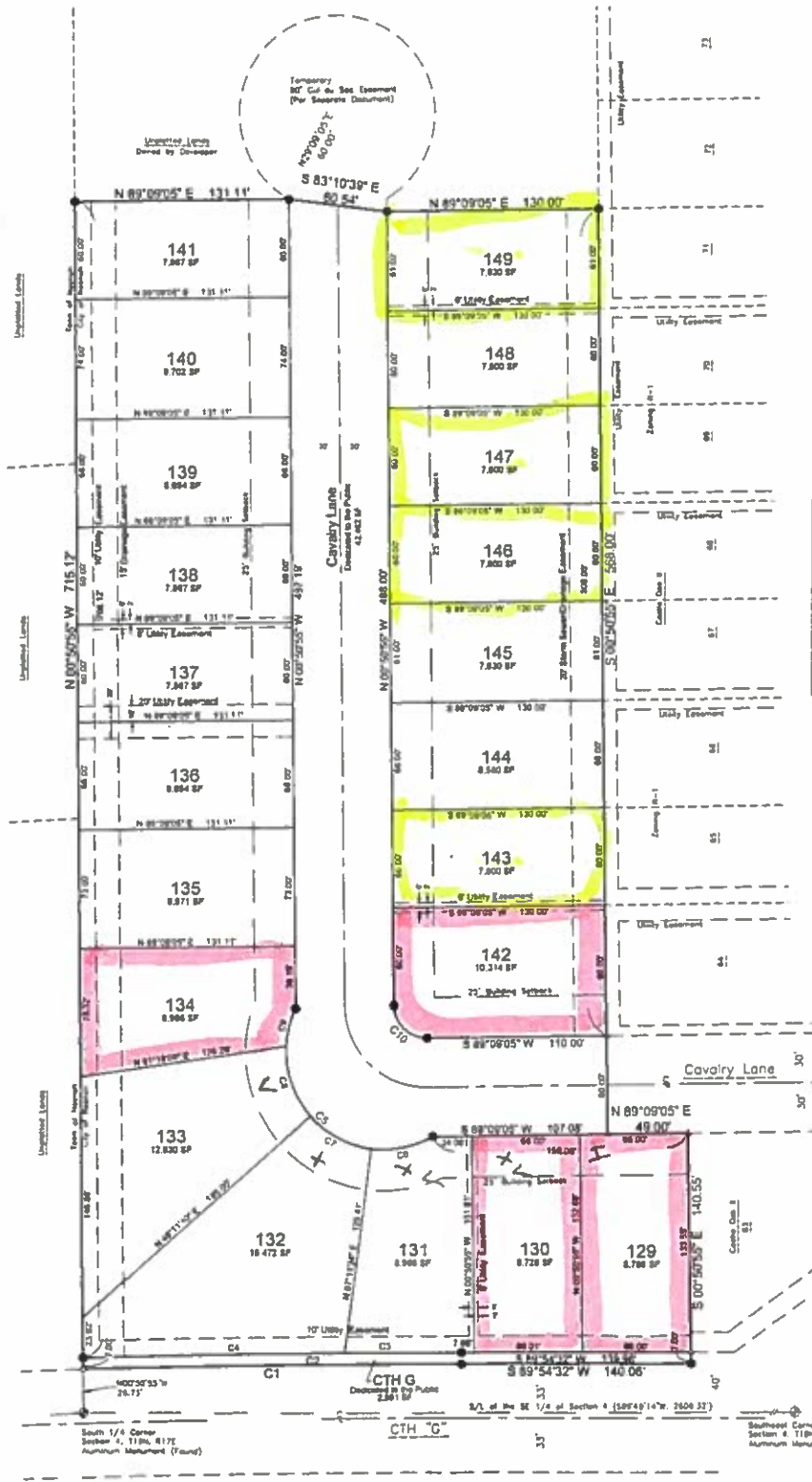
NOTES

All linear measurements have been made to the nearest one hundredth of a foot
All angular measurements have been made to the nearest 20 seconds and computed to the nearest half second

LEGEND

- ⊙ 1/2" Rebar Found
- 1/2" Rebar Found
- ⊙ 1/2" x 18" Steel Rebar @ 30in x LP SET
- ⊙ All other markers
- ⊙ 1/2" x 18" Steel Rebar @ 130in x LP SET
- ⊙ LF Lot area in square feet
- () Rounded As

Curve	Radius	Chord Distance	Chord Length	Arc Length	Curve Angle	Tangent Bearing to	Tangent bearing out
C1	7523.07'	0° 00' 54.62" W	230.07'	230.07'	1° 00' 00"	S 89° 54' 22" W	S 89° 54' 22" W
C2	7540.00'	0° 00' 54.94" W	230.07'	230.17'	1° 00' 00"	N 89° 54' 32" E	N 89° 54' 32" E
C3	7540.00'	0° 00' 55.17" W	230.07'	230.17'	1° 00' 00"	S 89° 54' 32" W	S 89° 54' 32" W
C4	7540.00'	0° 00' 55.29" W	230.07'	230.27'	1° 00' 00"	N 89° 54' 32" E	N 89° 54' 32" E
C5	65.00'	N 87° 14' 32" W	114.40'	191.88'	148° 52' 31"	S 89° 12' 30" W	N 89° 14' 30" E
C6	65.00'	N 77° 19' 45" E	38.20'	38.73'	38° 58' 36"	S 89° 12' 30" W	S 87° 40' 00" E
C7	65.00'	S 82° 19' 45" E	43.20'	43.80'	49° 30' 45"	S 89° 12' 30" W	S 87° 40' 00" E
C8	65.00'	S 10° 19' 45" E	68.20'	68.77'	64° 10' 00"	S 89° 12' 30" W	S 82° 20' 00" E
C9	65.00'	S 12° 52' 17" W	23.68'	23.81'	22° 54' 32"	S 89° 12' 30" W	S 28° 14' 30" W
C10	20.00'	N 49° 59' 59" W	20.27'	21.42'	98° 59' 59"	S 89° 12' 30" W	N 49° 59' 59" W



James R. Behal, Wisconsin Professional Land Surveyor No. 8-2682 Date

There are no objections to this plat with respect to Secs. 236.15, 236.16, 236.20 and 236.21(1) and (2), Wis. Stats. as provided by s. 236.12, Wis. Stats.

Certified _____ 20
Department of Administration

Revision Date Mar 27, 2015

File 3448Final IV.dwg
Date 03/27/2015
Drawn By Jim
Sheet 1 of 2

DAVEL ENGINEERING & ENVIRONMENTAL, INC.
CIVIL ENGINEERING CONSULTANTS
1811 Racine Street, Monona, WI 53652
PH: 820-681-1888 Fax: 820-433-6886
www.davel.com